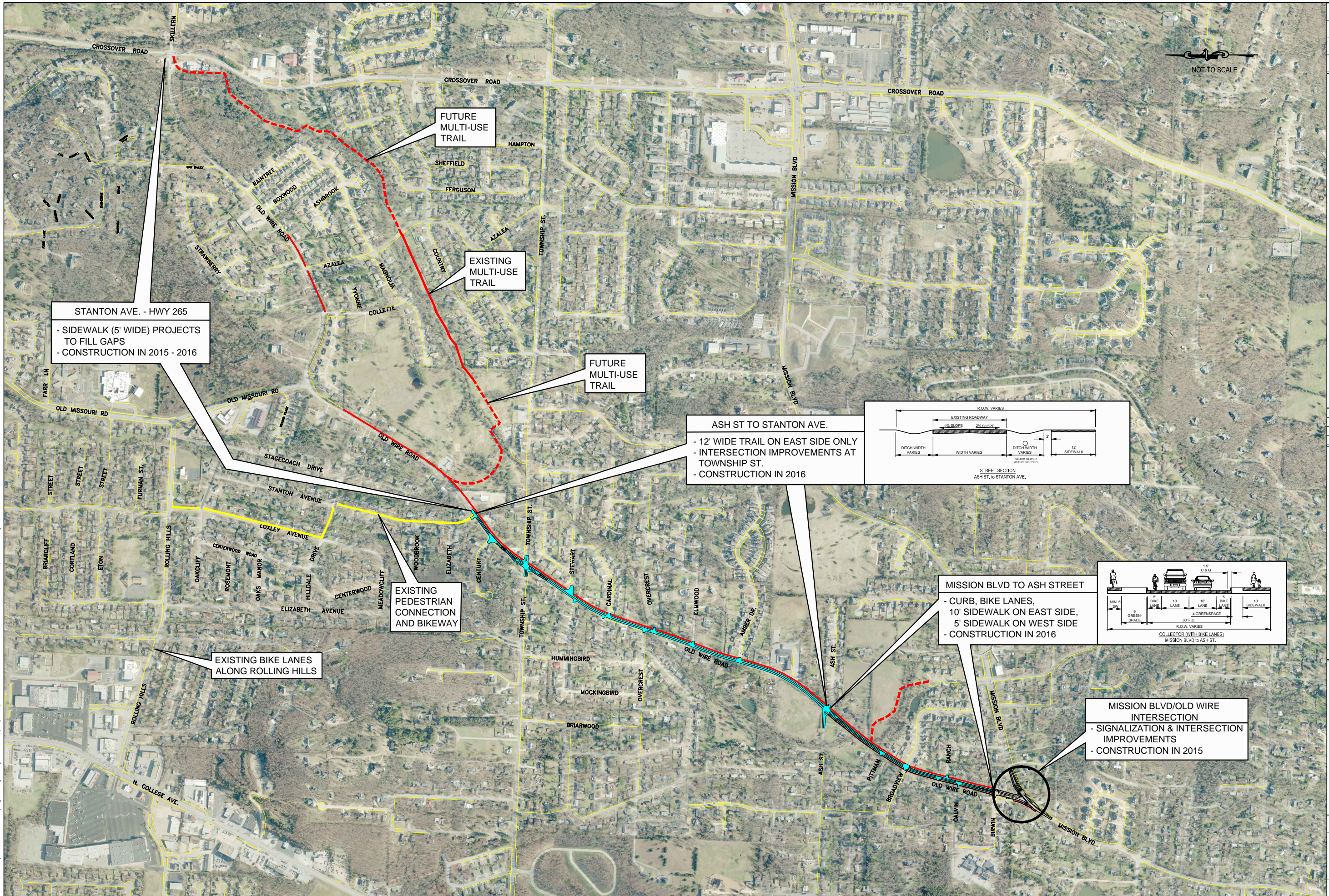


January 23, 2015 K:\Engineering Design Services\Projects\Old Wire Road-Mission to Crossover\Revised Concept012215.dwg



STANTON AVE. - HWY 265  
- SIDEWALK (5' WIDE) PROJECTS TO FILL GAPS  
- CONSTRUCTION IN 2015 - 2016

EXISTING BIKE LANES ALONG ROLLING HILLS

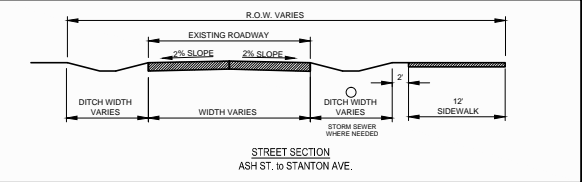
EXISTING PEDESTRIAN CONNECTION AND BIKEWAY

FUTURE MULTI-USE TRAIL

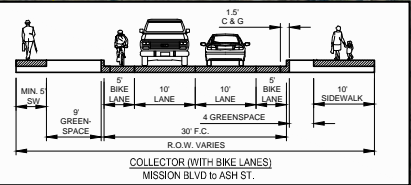
EXISTING MULTI-USE TRAIL

FUTURE MULTI-USE TRAIL

ASH ST TO STANTON AVE.  
- 12' WIDE TRAIL ON EAST SIDE ONLY  
- INTERSECTION IMPROVEMENTS AT TOWNSHIP ST.  
- CONSTRUCTION IN 2016



MISSION BLVD TO ASH STREET  
- CURB, BIKE LANES, 10' SIDEWALK ON EAST SIDE, 5' SIDEWALK ON WEST SIDE  
- CONSTRUCTION IN 2016



MISSION BLVD/OLD WIRE INTERSECTION  
- SIGNALIZATION & INTERSECTION IMPROVEMENTS  
- CONSTRUCTION IN 2015

SURVEYED BY: DVD/JAP  
DRAWN BY: JTS  
DESIGNED BY: -  
FILE NAME: Revised Concept012215.dwg

# OLD WIRE ROAD IMPROVEMENTS

## MISSION BLVD TO CROSSOVER ROAD

TITLE:

REVISED

ENGINEERING DIVISION  
113 W. MOUNTAIN STREET  
PHONE NO: (479) 575-8206 FAX NO: (479) 575-8202

Fayetteville  
ARKANSAS

DATE: January 23, 2015  
SHEET:

1

PROJECT: OLD WIRE ROAD