

City of Fayetteville Staff Review Form

2017-0519

Legistar File ID

10/3/2017

City Council Meeting Date - Agenda Item Only
N/A for Non-Agenda Item

Paul Becker

9/14/2017

Chief Financial Officer /
Finance & Internal Services Department

Submitted By

Submitted Date

Division / Department

Action Recommendation:

To approve a payment in the amount of \$4,000 to the University of Arkansas for costs associated with the memorialization to the historical event of the Trail of Tears as identified by the attached plan submitted by the U of A and to approve a Budget Adjustment. The budget adjustment will also partially reimburse the City for the cost of signage associated with a mural that has been placed on the railroad tunnel located on the Tsa La Gi Trail in the amount of \$1,000.

Budget Impact:

1010.090.6600-5315.00

General

Account Number

Fund

17010.1

Trail of Tears Signage

Project Number

Project Title

Budgeted Item? No

Current Budget

Funds Obligated

Current Balance

\$	-
----	---

Does item have a cost? Yes

Item Cost

\$	5,000.00
----	----------

Budget Adjustment Attached? Yes

Budget Adjustment

\$	5,000.00
----	----------

Remaining Budget

\$	-
----	---

V20140710

Previous Ordinance or Resolution # _____

Original Contract Number: _____

Approval Date: _____

Comments:



MEETING OF OCTOBER 3, 2017

TO: Mayor and City Council
FROM: Paul Becker
DATE: September 14, 2017
SUBJECT: Trail of Tears IDSP Plan

RECOMMENDATION:

To approve a payment in the amount of \$4,000 to the University of Arkansas for costs associated with the memorialization to the historical event of the Trail of Tears as identified by the attached plan submitted by the U of A and to approve a Budget Adjustment. The budget adjustment will also partially reimburse the City for the cost of signage associated with a mural that has been placed on the railroad tunnel located on the Tsa La Gi Trail in the amount of \$1,000.

The intent of the landscape improvements for this area is to highlight the location as an important piece of the overall campus landscape acreage. The project will include incorporating two interpretive signs describing the history of this area as it relates to the Fayetteville community and the State of Arkansas. The two new signs will be designed to match the campus current signage and wayfinding standards. The landscape portion of the plan will include the installation of several large evergreen shrubs to provide screening and privacy from the adjacent Women's Soccer complex.

The current site consists of two historical markers which describe the history and the importance of the area. One of the historic markers (plaque) is attached to an existing large stone and the other marker is one of the campus historical markers which are located at significant historical locations throughout the campus property. This marker memorializes the historic event of the Trail of Tears at the northwest corner of Martin Luther King Blvd and Stadium Drive. A copy of the IDSP plan and details are attached.

BACKGROUND:

The City received a \$5000 grant previously from the State of Arkansas to provide for the memorialization of the historical event known as the Trail of Tears. This would accomplish that purpose and expend the grant fund currently held.

BUDGET/STAFF IMPACT:

Attachments:

Budget Adjustment
IDSP Plan
City of Fayetteville Interpretive Panel & Quote

3 **ELEVATION DRAWINGS**

Sign Type 41b

Small Interpretive Sign
Single-faced freestanding tableau style

Materials

Front and back panel are cut from heavy gauge aluminum sheet. Back panel is welded to aluminum tube post. All components are fastened from back.

All fasteners are stainless steel; visible fasteners are painted to match adjacent materials.

Interpretive panel is Everest Embedded by Artcraft Display Graphics.

Finishes

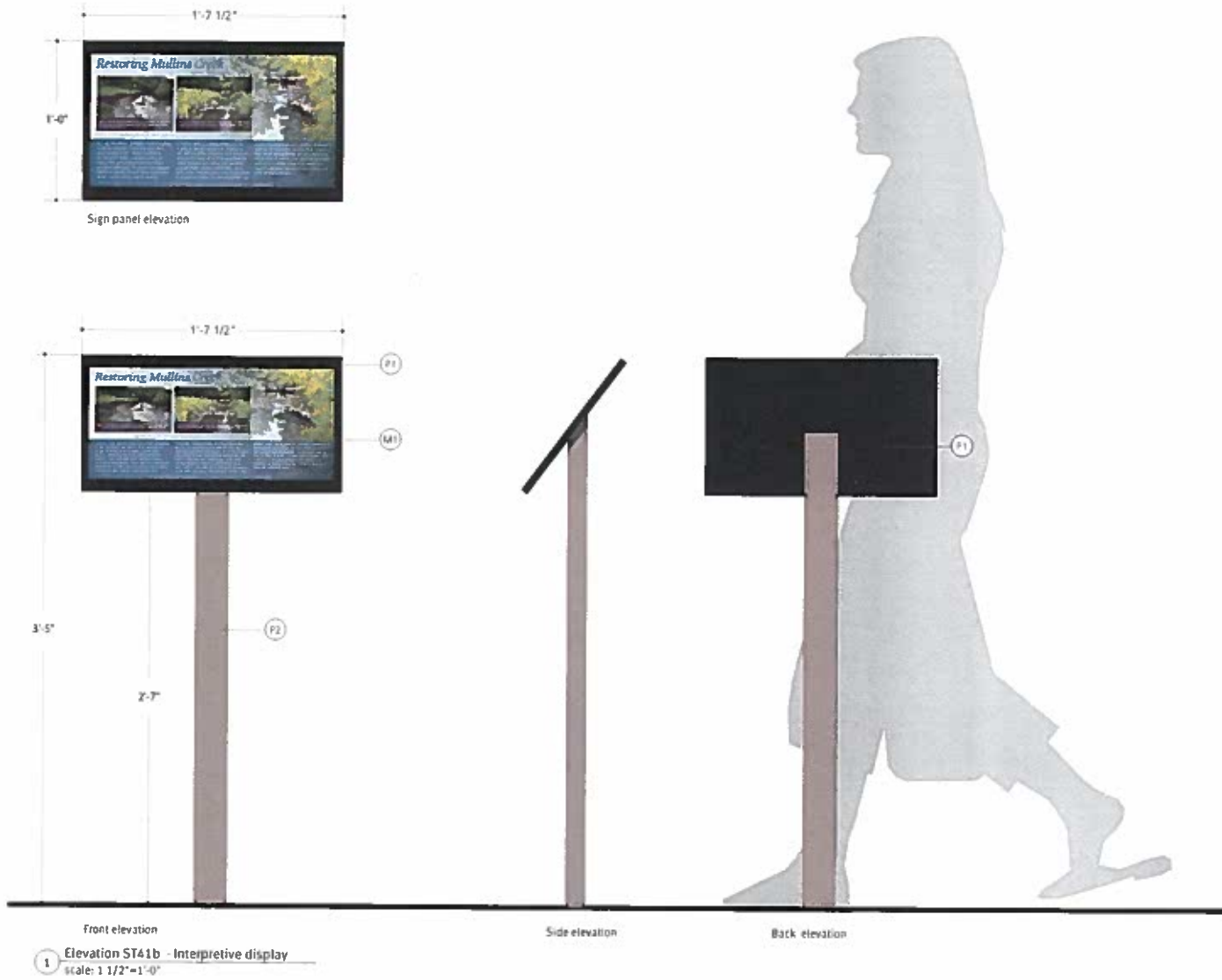
All aluminum components to be finished with Coraflon fluoropolymer paint per specified colors.

Installation

Sign assembly to be direct burial into poured concrete footers. Fabricator to determine footer dimensions.

THIS DRAWING REPRESENTS DESIGN INTENT ONLY. FABRICATOR WILL BE RESPONSIBLE TO VERIFY ALL CONDITIONS IN FIELD PRIOR TO SHOP DRAWINGS

Client/Project	Project No.
University of Arkansas Mullins Creek Interpretive signage	14UARK 140818
Date	Revises
8.01.14	08.01.14
Code	N/A



4 LAYOUT GUIDELINES

Sign Type 41b

Example of Interpretive Panel

Overall panel size is 10 1/2" x 1'-7". The interpretive graphic sits behind the top frame.

All art is supplied as full size files with outlined text.

Color printouts must be submitted to fabricator for their use in color matching.

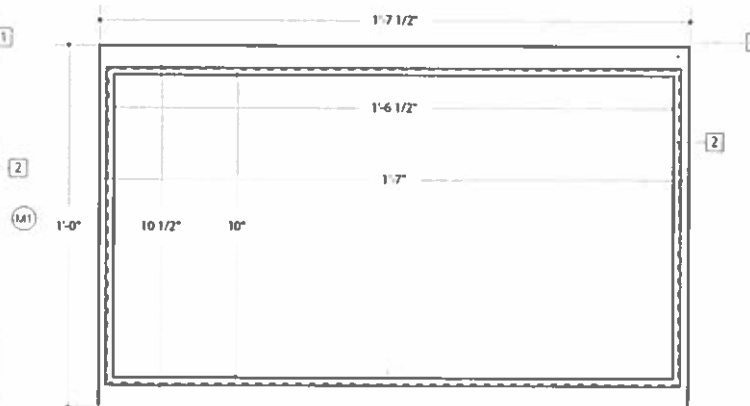
Interpretive panel by:

Artcraft Display Graphics Inc.
San Francisco, CA
1.800.994.9451
artcrft.com



1 Flat Elevation of Interpretive Panel
scale: 3"=1'-0"

provided as artwork



2 Rear Elevation of Front Panel
scale: 3"=1'-0"

- 1 1/4" thick aluminum plate cut and routed to accept 3/16" thick panel - fastened to base plate from rear with tamper-proof fasteners. All fasteners to be flush with surface.
- 2 3/16" thick interpretive panel held in place by front panel

THIS DRAWING REPRESENTS DESIGN INTENT ONLY.
FABRICATOR WILL BE RESPONSIBLE TO VERIFY ALL
CONDITIONS IN FIELD PRIOR TO SHOP DRAWINGS

Client/Project	University of Arkansas Multins Creek interpretive signage	Project No.	14UARK 140B1B
Date	8.01.14	Scale	Half Scale

Sign Type 41b

Artwork layouts

All art is supplied as full size files with outlined text.

Color printouts must be submitted to fabricator for their use in color matching.

Interpretive panel by:
Artcraft Display Graphics Inc.
 San Francisco, CA
 1.800.994.9451
 artcrft.com

THIS DRAWING REPRESENTS DESIGN INTENT ONLY.
 FABRICATOR WILL BE RESPONSIBLE TO VERIFY ALL
 CONDITIONS IN FIELD PRIOR TO SHOP DRAWINGS.

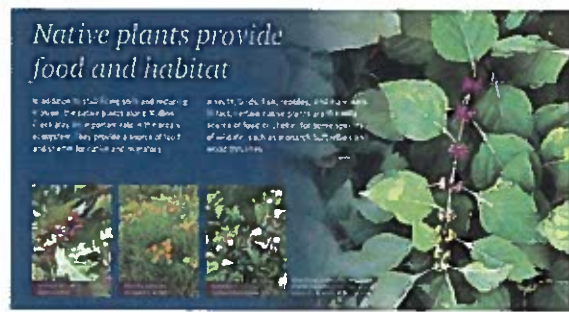
Client/Project University of Arkansas Mullins Creek Interpretive signage		Project No. 14018
Date 8.01.14	Revision 1	Scale Half Scale



1 Restoring Mullins Creek
 Scale: 3"=1'-0"



2 Native plants of the Ozarks
 Scale: 3"=1'-0"



3 Native plants provide food and habitat
 Scale: 3"=1'-0"



4 The role of native plants
 Scale: 3"=1'-0"



5 The benefits of native plants
 Scale: 3"=1'-0"

Sign Type 41B

Small Interpretive Sign
Single-faced freestanding tableau style

Materials

Extruded tube post is welded to heavy gauge aluminum back plate.

Front panel is cut from heavy gauge aluminum sheet with window cut from center. Inside edge is routed to hold message panel.

Interpretive panel is inset into front frame. Components are assembled and mechanically fastened from rear. Tamper-proof fasteners are countersunk and flush to surface.

Finishes

All aluminum components to be finished with Coralon fluoropolymer paint per specified colors.

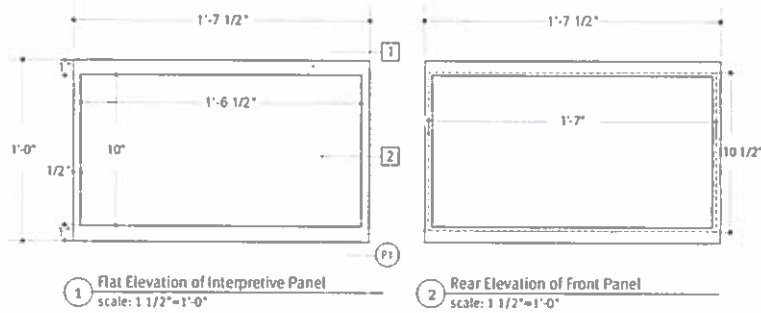
All fasteners are stainless steel, visible fasteners are painted to match adjacent materials.

Installation

Sign assembly to be direct burial into below grade poured concrete footers. Backfill with soil and topdress with mulch. Fabricator to determine footer dimensions.

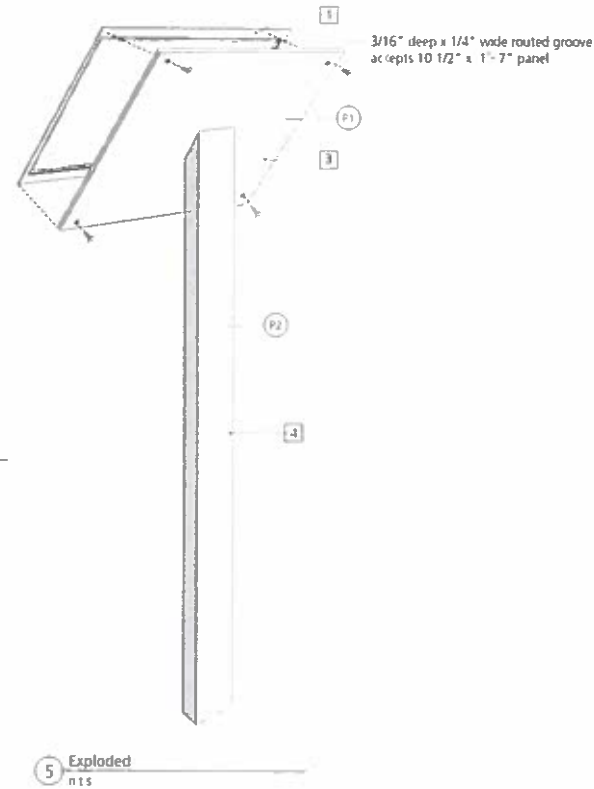
THIS DRAWING REPRESENTS DESIGN INTENT ONLY. FABRICATOR WILL BE RESPONSIBLE TO VERIFY ALL CONDITIONS IN FIELD PRIOR TO SHOP DRAWINGS

Client/Project	Project No.	
University of Arkansas Mullins Creek interpretive signage	14UARK 140818	
Date	Revisions	Scale
8.01.14	08.01.14	N/A



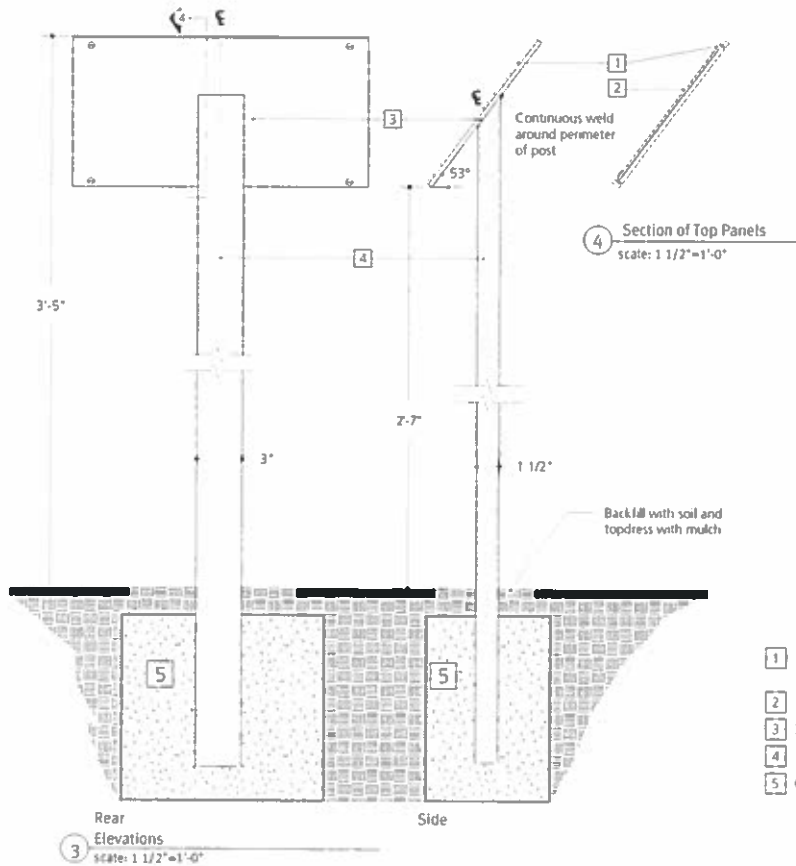
1 Flat Elevation of Interpretive Panel
scale: 1 1/2"=1'-0"

2 Rear Elevation of Front Panel
scale: 1 1/2"=1'-0"



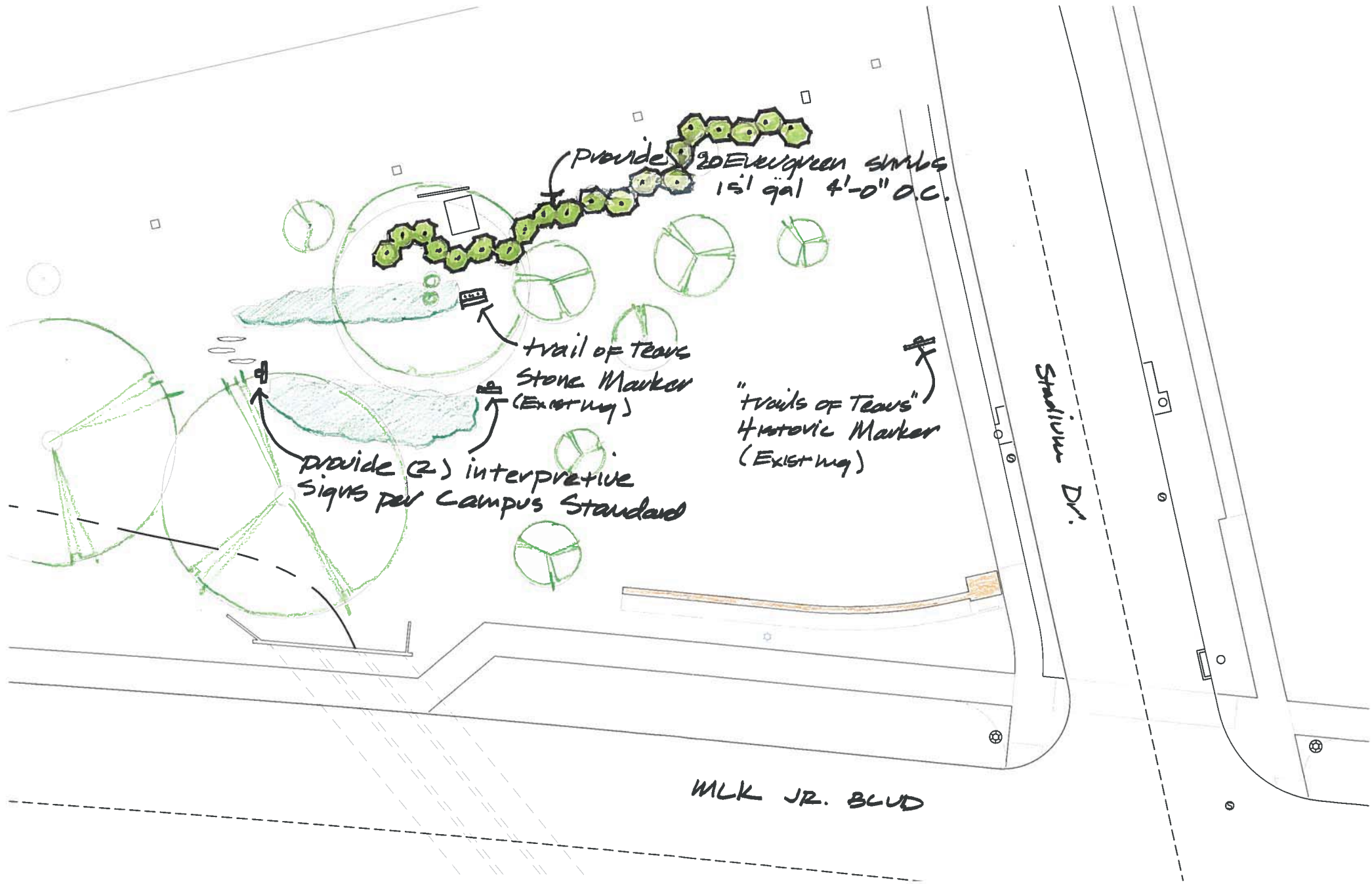
5 Exploded
n t s

- 1 1/8" thick aluminum plate cut and routed to accept 3/16" thick panel - fastened to base plate from rear with tamper-proof fasteners. All fasteners to be flush with surface.
- 2 3/16" thick panel held in place by front panel
- 3 3/8" thick aluminum back plate welded to post extrusion in center of back panel
- 4 1 1/2" x 3" x 1/4" thick wall aluminum extrusion post
- 5 Concrete footers (size TBD by fabricator) Top of footers to be below grade and back filled with river rock.



3 Rear Elevations
scale: 1 1/2"=1'-0"

Side



provide 20 Evergreen shrubs
1 1/2 gal 4'-0" O.C.

trail of tears
Stone Marker
(Existing)

provide (2) interpretive
signs per Campus Standard

"trails of tears"
Historic Marker
(Existing)

Stadium Dr.

MLK JR. BLVD

Project estimate:

Tsa La Gi Trail Mural: Interpretive Panel

\$437 Interpretive Panel Construction and Shipping

- \$348 material
- \$89 shipping

\$400 Installation by Parks crew, includes labor and materials

- \$100 materials
- \$300 labor

\$150 Usage fee estimate – Trail of Tears map illustration

\$987 ***Total***

To: Ken Eastin
City of Fayetteville
City Hall 433 Hay Street
Fayetteville, AR 72701

Phone#: 479-444-3472

Fax#: 479-521-7714

Account Executive: Rhiannon de Cesare

ID #: 053009.09

Tag Name:

Part Number	Qty	Description	Each	Ext
E12-03-T4	1	1/2" Exterior CHPL Graphic. Panel Size: 18" x 24" 4 Threaded Inserts w/ Tamper Resistant Bolts.	133.00	133.00
SPG1212	1	Single Post Pedestal (12" x 12" Mounting Plate at 45 Degree). - Black Powder Coated Aluminum. - In-Ground Mount. (Surface Mount available).	175.00	175.00
99810	1	Color Sample - 8" x 10" x 1/16" CHPL. - Used in production for color matching and resolution. - Includes shipping.	40.00	40.00

All Fossil panels feature our exclusive 12-Color HD Printing.

Subtotal: \$348.00

Digital files must conform to Fossil File Prep Guidelines (FossilGraphics.com)
Electronic layout proofs provided at no charge.

Subtotal: 348.00

Features are indicated in Part Numbers:

"-P" = Custom Shape; "-T" = Threaded Inserts; "-D" = Double Sided; "-H" = Holes; "MURAL" - Indicates panels built to go directly beside another panel.

Shipping: 89.00

0 %Tax: 0.00

TOTAL: \$437.00

Shipping to zip code: 72701. Estimate based on destination being a non-residence that has a forklift if necessary.

Shipping charges include packaging and insurance.

Quote valid 90 days. Order produced under our standard Terms and Conditions of Sale (FossilGraphics.com/terms). For installation info or to determine best thickness of CHPL to meet your requirements (FossilGraphics.com/guide).

TERMS: Purchase Order / Balance Net 30 After Delivery

Please sign to authorize production: _____ / / **Print:** _____



MURAL: Interpretive Panel Sample

Learn more about the story, the artwork, the artist, the location and the significance of the mural.

At the end of the trail, you will see a large mural of a hand holding a branch. This mural is a symbol of hope and a reminder of the importance of environmental stewardship.

The mural was created by a local artist and is a beautiful addition to the park. It is a great place to take a break and enjoy the view.

For more information, please contact the park office.



MURAL: Interpretive Panel Sample

Lorem ipsum dolor sit amet, cona ipiscing elit, sed do eiusmod lafl tempor incididunt ut labore et dolore magna aliqua.

Ut enim ad minim veniam, quis nostrud exercitation ullamco laboris nisi ut aliquip ex ea commodo consequat. Duis aute irure dolor in reprehenderit in voluptate velit esse cillum dolore eu fugiat nulla pariatur. Excepteur sint occaecat cupidatat non proident, sunt in culpa qui officia deserunt mollit anim id est laborum.

mod tempor incididunt ut labore et dolore magna aliqua. Ut enim ad minim veniam, quis nostrud exercitation ullamco laboris nisi ut aliquip ex ea commodo consequat. Duis aute irure dolor in reprehenderit in voluptate velit esse cillum dolore eu fugiat nulla pariatur. Excepteur sint occaecat cupidatat non proident, sunt in culpa qui officia deserunt mollit anim id est laborum.



Photo Credit

Lorem ipsum dolor sit amet, consectetur adipiscing elit, sed do eiusmod tempor incididunt ut labore et dolore magna aliqua. Ut enim ad minim veniam, quis nostrud exercitation ullamco laboris nisi ut aliquip ex ea commodo consequat. Duis aute irure dolor in reprehenderit in voluptate velit esse cillum dolore eu fugiat nulla pariatur. Excepteur sint occaecat cupidatat non proident, sunt in culpa qui officia deserunt mollit anim id est laborum.

Lorem ipsum dolor sit amet, consectetur adipiscing elit, sed do eiusmod tempor incididunt ut labore et dolore magna aliqua. Ut enim ad minim veniam, quis nostrud exercitation ullamco laboris nisi ut aliquip ex ea commodo consequat. Duis aute irure dolor in reprehenderit in voluptate velit esse cillum dolore eu fugiat nulla pariatur. Excepteur sint occaecat cupidatat non proident, sunt in culpa qui officia deserunt mollit anim id est laborum.

